

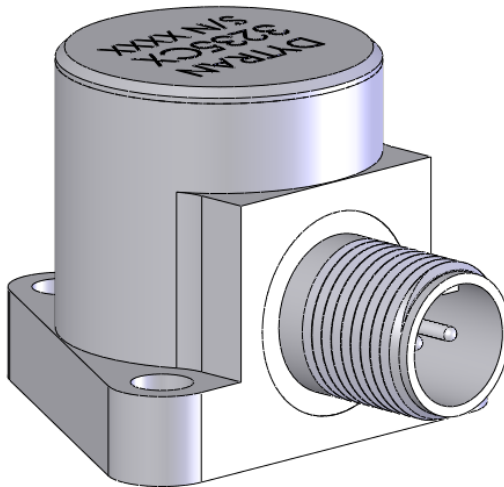


Dynamic Transducers and Systems
21592 Marilla St. • Chatsworth, CA 91311 • Phone 818-700-7818
www.dytran.com • e-mail: info@dytran.com

OG3235C
REV A, ECN 10431, 03/16/14

OPERATING GUIDE MODEL 3235C

**HIGH TEMPERATURE CHARGE MODE
HIGH CHARGE SENSITIVITY
EXTREME STABILITY OVER TEMPERATURE
BALANCED DIFFERENTIAL ACCELEROMETER**



This manual includes:

- 1) Supplemental Operating Guide Model 3235C**

SUPPLEMENTAL OPERATING GUIDE

MODEL 3235C HIGH TEMPERATURE CHARGE MODE ACCELEROMETER

INTRODUCTION

Model 3235C is a charge mode accelerometer designed to measure vibration of surfaces at temperatures up to 550°F. This accelerometer uses an ultra-stable piezoelectric crystal in its self-generating seismic element.

Model 3235C may be used with various charge amplifiers of the vibration type (as opposed to DC coupled electrostatic types.)

DESCRIPTION

Refer to Outline/Installation drawing 127-3235C.

Model 3235C is packaged in a hermetically sealed stainless steel housing and features a transverse mounted glass-to-metal sealed connector (2-pin, 7/16-27 UNS-2A shell). The unit is installed by use of three 8-32 x 1/2 inch long socket head cap screws, (supplied).

INSTALLATION

To mount Model 3235C, it is necessary to drill and tap three equally spaced 8-32 mounting ports on a 1.188 diameter bolt circle. For best high frequency response, contact area of accelerometer must be selected or prepared to be flat to .001 TIR. The holes must be drilled perpendicular to mounting surface to within 2 degrees of angular error.

After drilling and tapping, clean area to remove all traces of cutting oil and machining chips.

Spread a thin layer of silicone grease on mating surfaces of 3235C unit. Position accelerometer and fasten using screws supplied, torque to 10-12 lb-in.

Assure that the accelerometer mounting surfaces are in intimate contact with test surface. If surfaces appear to be meeting squarely, the accelerometer is ready for connection with cable.

INTERCONNECTION

The recommended cable, available in various lengths, for 3235C is Dytran Model 6838AXX, where "XX" denotes cable length in feet. This cable has a 2-pin 7/16-27 UNS-2B plug on one end.

Connect cable to the 3235C unit and connect other end to charge amplifier. Apply lock wire if applicable.

MAINTENANCE AND REPAIR

Should you experience a problem, contact the Dytran factory for technical assistance in analyzing and trouble-shooting. If the product must be returned for evaluation and/or repair, you will be given an RMA (returned materials authorization) number and instructions for returning instrument to the factory. Do not return instrument without first obtaining this authorization to return.